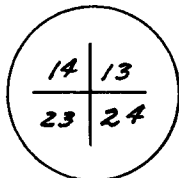


CERTIFIED LAND CORNER RECORDATION

T 19 N, R 70 W



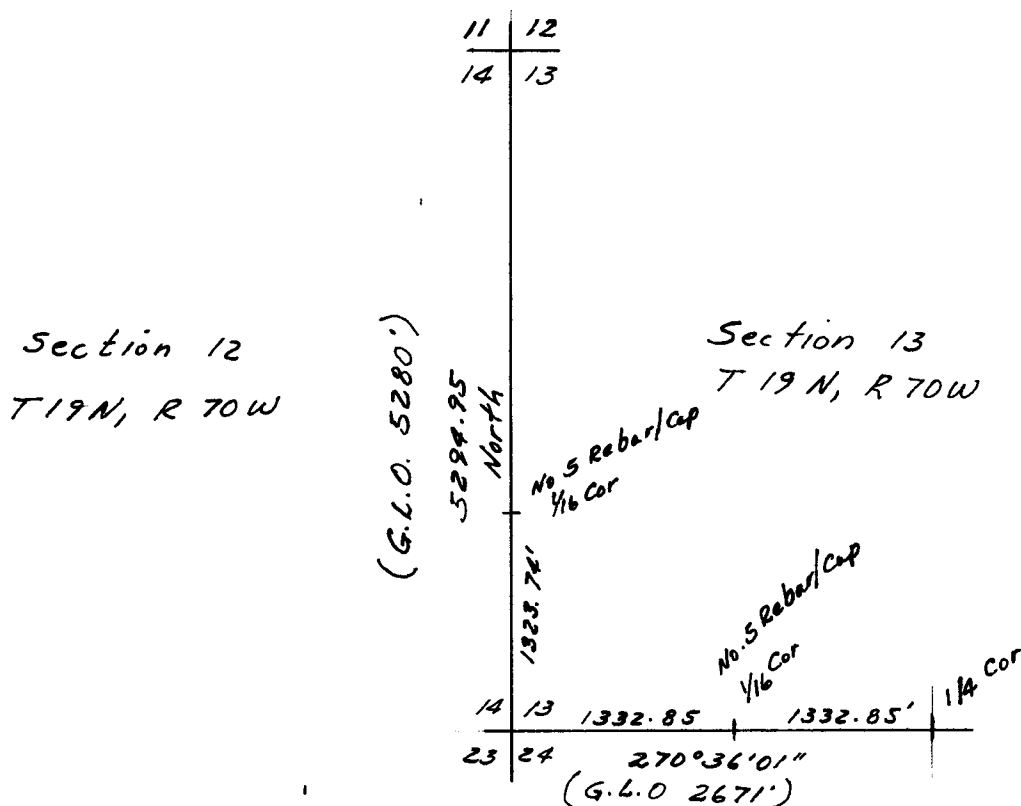
DESCRIPTION OF CORNER EVIDENCE FOUND, AND ORIGINAL RECORD (If known)

Found pinkish stone 14" x 3" well set and standing 14" above ground with one weak mark in east edge and three weak marks in south (14") face. Original monument described as a sandstone 18" x 12" x 9" set 12" deep with 3 notches on south side and 1 notch on east side.

DESCRIPTION OF MONUMENT AND ACCESSORIES ESTABLISHED TO PERPETUATE THE ORIGINAL LOCATION OF THIS CORNER:

Set a 1 1/2" Iron pipe at north face as corner monument. Left stone in place as a reference monument.

SKETCH, WITH COURSE AND DISTANCE TO ADJACENT CORNER IF DETERMINED IN THIS SURVEY. (May Sketch or Paste Reproduction on Reverse Side.)



I, Edward C. Fry certify that I have carefully performed ~~or reviewed~~ the work done on the diagrammed corner as reported on this recordation form and approve the same.

Edward C. Fry Signature of Surveyor P.E./L.S. 662 Registration No.

STATE OF WYOMING,
Office of Clerk and Recorder,
County of _____

594254

This "corner record" was filed for record on the OCT 2 day of 1980, 19____, was noted on the cross-index plat and is assigned page No. _____, in book No. _____.

Janet C. Whitehead
County Official

Cross Index No. _____	T. _____	R. _____	Mer. _____
	T. <u>19</u>	R. <u>20</u>	Mer. _____
Photographed _____	T. _____	R. _____	Mer. _____
Indexed _____	T. _____	R. _____	Mer. _____
Posted _____	T. _____	R. _____	Mer. _____
Assessor _____	T. _____	R. _____	Mer. _____